



Instruction for use
DIP & BRUSH K2 Zirkon liquid



Immersion technique



Immerse the milled zirconia restorations in the K2 Zirconia liquid with a synthetic tong. Please never use metallic fixtures. The restoration must be completely covered with liquid and keep completely submerged for 1 - 2 minutes. Then gently remove with a small synthetic tong and dab with an absorbent paper towel or a cotton swab.

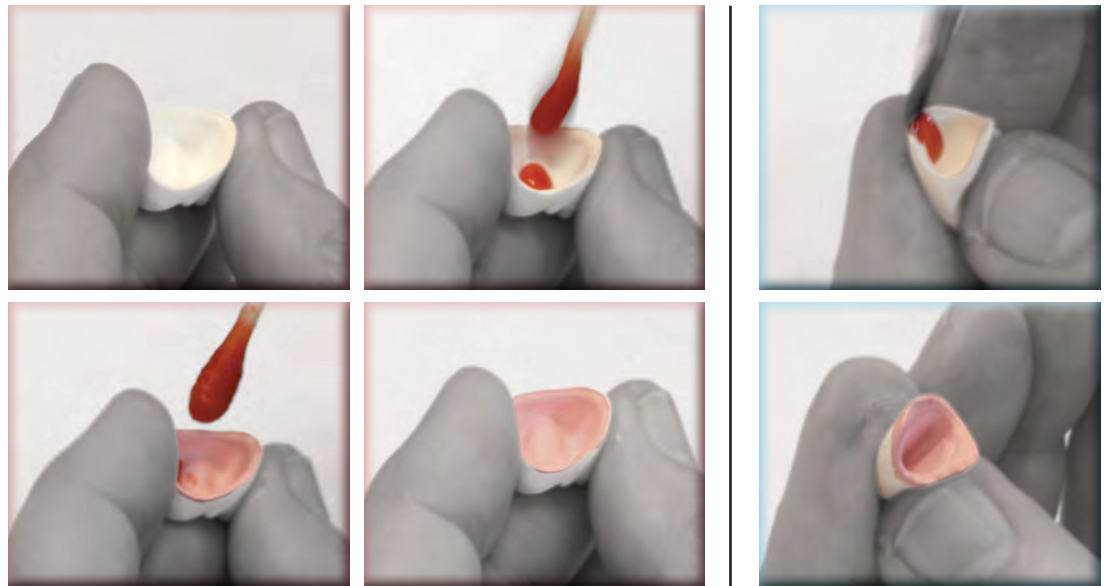
Painting technique

Step 1

- Colour the crown inner surfaces several times in the corresponding dentine colour according to the desired intensity (3 – 5 x)

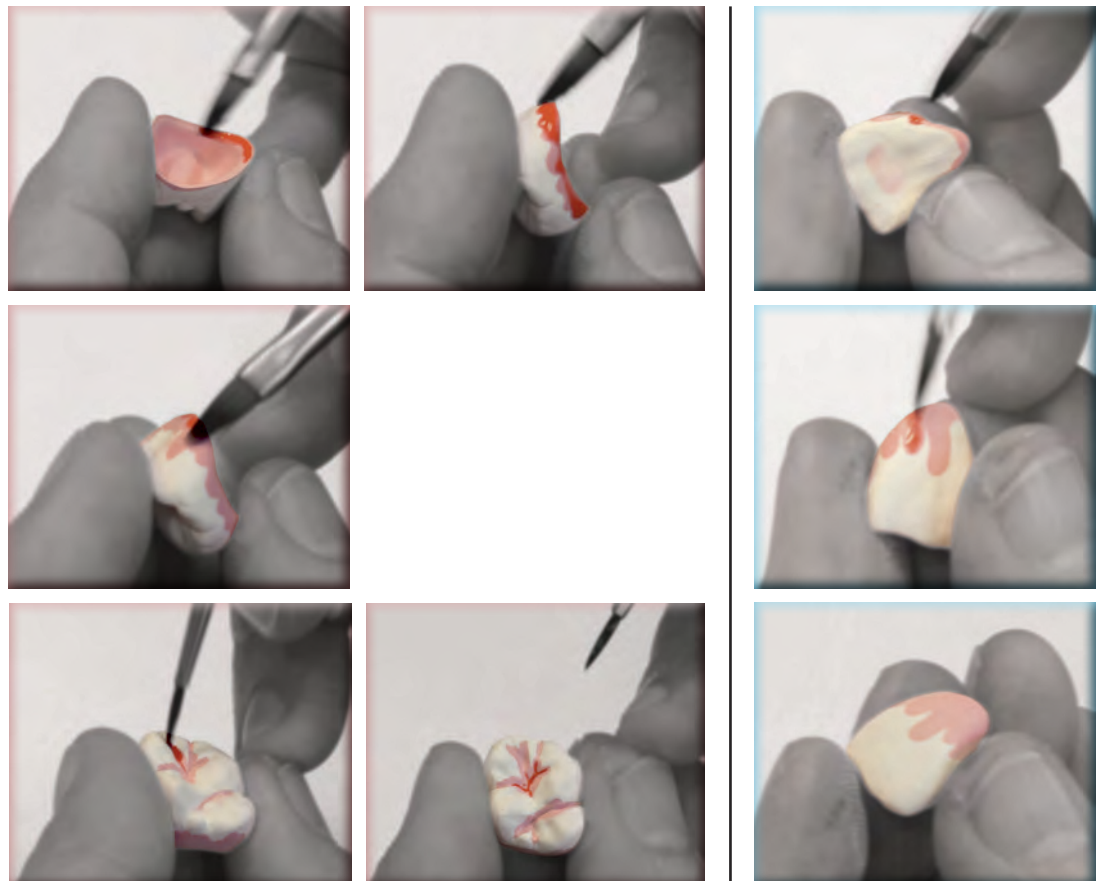
Sample work Molar UJ

Sample work anterior tooth



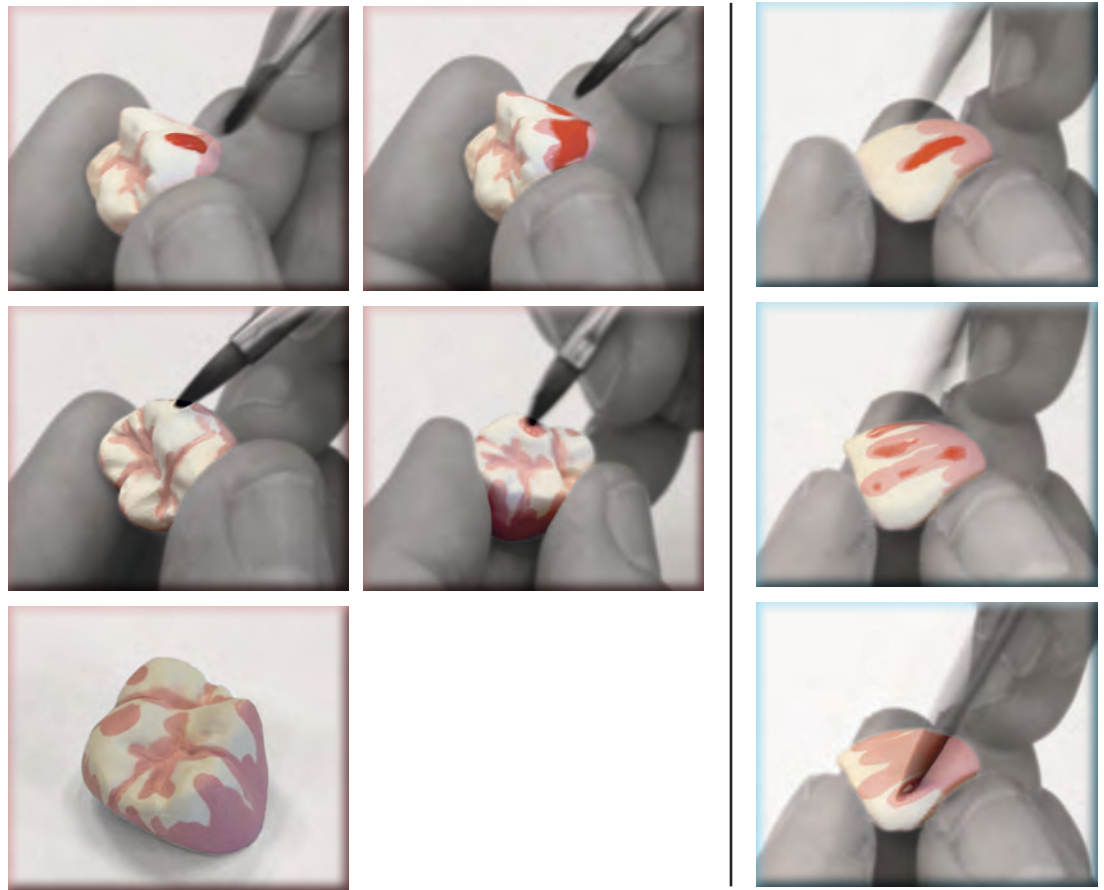
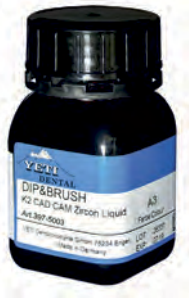
Step 2

- Color the cervical area and individual characteristics in a slight darker colour depending on the patient's situation.



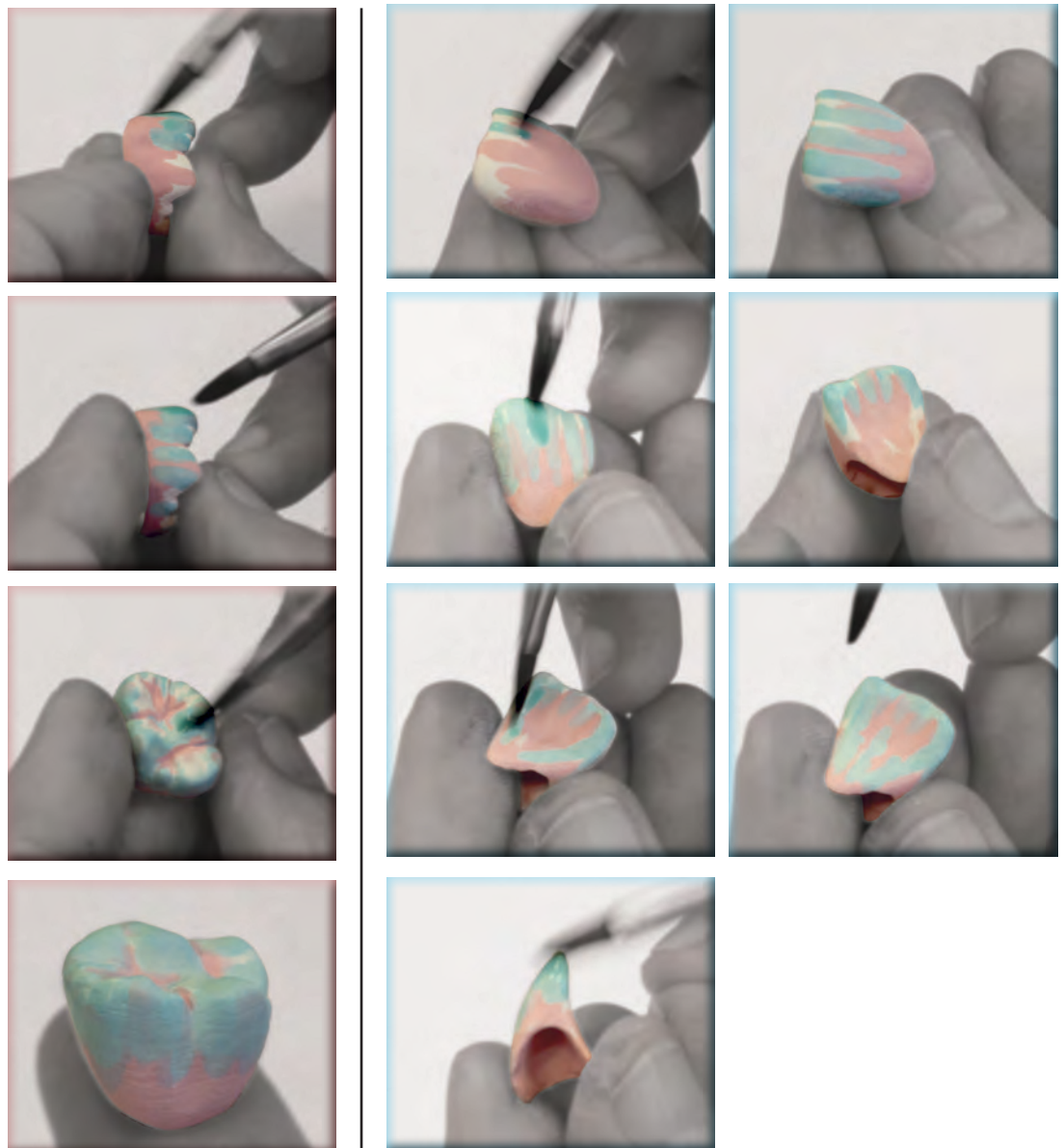
Step 3

- Colour the dentine area in the primary colours: Dentinal Mamelons, interproximal surfaces, abraded cusps



Step 4

- Paint the cutting and enamel ridge area in blue (BL1) and grey (GR3) colour matching the remaining teeth.
- Tip: Paint the enamel ridges of the anterior teeth towards the labial surface alternately in grey and blue





Result after painting



Result after drying



Well-dried result before sintering with YETI SINT



YETI SINT Item n° 483-0000



Result after sintering



Result after painting with Stains and finishing with glaze paste



DIP & BRUSH Zircon liquid, 100 ml

- | | |
|-------------------------|------------------------|
| A1 = Item n° 397-5001 | C2 = Item n° 397-5011 |
| A2 = Item n° 397-5002 | D2 = Item n° 397-5014 |
| A3 = Item n° 397-5003 | BL1 = Item n° 397-5017 |
| A3,5 = Item n° 397-5004 | GR3 = Item n° 397-5019 |
| B2 = Item n° 397-5007 | |



Caramista O/B Item n° 312-4000



Stain Humidor Item n° 312-0001



Stain Item n° 340-0201/0210



K2 Glasur Item n° 336-0010

